

VCCC - RATMALANA/ Colombo International Airport Ratmalana

VCCC AD 2.1 AERODROME LOCATION INDICATOR AND NAME

1.	Location Name	Ratmalana
2.	Name of Aerodrome	Colombo International Airport Ratmalana
3.	ICAO Location Indicator	VCCC

VCCC AD 2.2 AERODROME GEOGRAPHICAL AND ADMINISTRATIVE DATA

1.	ARP co-ordinates and site at AD	064923N 0795306E 454M BRG 300 ⁰ GEO from Tower in main Terminal Building.
2.	Direction and distance from (city)	14KM From Colombo
3.	AD Elevation / Reference temperature /Mean low temperature	7.01M(23FT)/31.6 C ⁰
4.	Geoid undulation at AD ELEV PSN	(-) 98.52M
5.	MAG VAR /Annual change	2 ⁰ W (2021) / Negligible
6.	AD Administration, address, telephone, tele fax, e-mail , AFS	Airport and Aviation Services (S.L.) (Private) Ltd; Colombo International Airport Ratmalana, Ratmalana, Sri Lanka. Tel : +94112623030-7 Telex : 22481 Tele Fax : +94112635711 e-mail : amrma@airport.lk AFS : VCCCYDYX
7.	Types of traffic permitted (IFR/VFR)	VFR
8.	Remarks	Both Civil and Military traffic OPR

VCCC AD 2.3 OPERATIONAL HOURS.

1.	Aerodrome Administration	0030-1230 UTC DLY (RWY 04/22 closed BTN 0800-1100 (UTC) on 1 st and 3 rd TUE of EV month for SKED MAINT)
2.	Customs and Immigration	HJ
3.	Health and Sanitation	HJ
4.	AIS Briefing Office	HJ (Remotely Operate from AIS/VCBI) Telephone : +94-11-2264226 or 2264227 Fax : +94-11-2259916
5.	ATS Reporting Office	HJ (Remotely Operate from AIS/VCBI) Telephone : +94-11-2264226 or 2264227 Fax : +94-11-2259916
6.	Met Briefing Office	H24 (Remotely Operate from MET watch office/VCBI) Telephone : +94 11 2252721 Fax : +94 11 2252719
7.	Air Traffic Services	H24
8.	Fuelling	HJ
9.	Handling	HJ
10.	Security	H24
11.	Remarks	NIL

VCCC AD 2.4 HANDLING SERVICES AND FACILITIES

1.	Cargo Handling Facilities	Not Available
2.	Fuel and Oil Types	Fuel : Jet A-1 , Aviation Gasoline (AVGAS 100L). Oil grades : Required grades of oil and lubricants could be made available with prior notice to Caltex Lanka Lubricants Ltd, Sri Lanka.
3.	Fuelling Facilities and Capacity	Jet A-1 – 280 000 Capacity Arrangements could be made on request. AVGAS 100LL - Arrangements could be made on request. One NR "Scania" 2200IG refueller. Mobile refuellers AVBL.
4.	De-icing facilities	-
5.	Hanger space for visiting aircraft	Accommodate on availability
6.	Repair Facilities for visiting aircraft	Not Available
7.	Remarks	

VCCC AD 2.5 PASSENGER FACILITIES

1.	Hotels	City hotels by prior arrangements (At close proximity - 4KM)
2.	Restaurants	Within the airport premises .
3.	Transportation	Taxies available on call basis at the Information counter
4.	Medical Facilities	Medical centre is available with qualified nurse
5.	Bank and Post Office	Available within Airport premises
6.	Tourist Office	Available
7.	Remarks	Nil

VCCC AD 2.6 RESCUE AND FIREFIGHTING SERVICES

1	AD Category for FireFighting	CAT 6
2	Rescue equipment	Three firefighting vehicles with altogether 20800L water capacity and altogether 1880L foam capacity available. Portable fire pumps, Para Tec Air Gun 40, Cutting equipment, breathing apparatus sets, Hazmat Suits and Protective Suits available.
3	Capability for removal of disabled aircraft	No standard aircraft removal equipment available. However, Mobile Crane, R/T Crane ,Boom Truck and Fork Lift..etc standard maintenance equipment are available for emergency use on hiring basis(Outsource)
4	Remarks	Nil

VCCC AD 2.7 SEASONAL AVAILABILITY – CLEARING

AD Available throughout the year

VCCC AD 2.8 APRONS, TAXIWAYS AND CHECK LOCATIONS / POSITIONS DATA

1.	Designation, Surface and Strength of Apron	Surface : Asphalt Strength: 34/F/D/Z/U
2.	Designation, Width, Surface and Strength of Taxiways	Western TWY Width : 24M / Surface : Asphalt Strength : 34/F/D/Z/U Eastern TWY Width :17M / Surface : Asphalt Strength : Not AVBL
3.	Location and Elevation of Altimeter Checkpoints	Generally a whole area of international and domestic Apron serves as location for pre-flight altimeter check . Apron Elevation :4.14M
4.	Location of VOR Check points	Nil
5.	Location of INS Check points	Nil
6.	Remarks	Eastern TWY Closed

VCCC AD 2.9 SURFACE MOVEMENT GUIDANCE AND CONTROL SYSTEM AND MARKINGS

1.	Use of aircraft stand ID signs, TWY guide lines and visual docking/parking guidance system at aircraft stands.	Nose wheel guidance on TWY and Apron. Marshallers available.
2.	RWY and TWY markings and LGT.	RWY –Designation, THR, TDZ, Centre line, Edge, End, TORA signs, Pre-Threshold. TWY – Centre line, Edge and holding positions at all TWY/RWY intersections marked.
3.	Stop bars and RWY guard LGT	-
4.	Other RWY protection measures	-
5.	Remarks.	Marshalling services: ACFT Marshalling services requirement s should be directed to the ground handling agent or Airline operator.

VCCC AD 2.10 AERODROME OBSTACLES

Obstacles in Area 2					
ID/ Designation	Type	position	ELEV/HGT	Markings/ Type and Colour of OBST LGT	Remarks
a	b	c	d	e	f
CC_A2B_001	Tree	06° 48' 58.1" N 079° 53' 00.6"E	18.8M/9.2M		Tree
CC_A2B_002	Tree	06° 48'50.0" N 079° 52' 54.7"E	20.4M/13.7M		Tree
CC_A2B_003	Tree	06° 48'50.8" N 079° 52' 45.6"E	23.6M/15.1M		Tree
CC_A2B_004	Tree	06° 48'34.8" N 079° 52' 46.1"E	29.9M/22.9M		Tree

Obstacles in Area 2 Continue

ID/Designation	Type	position	ELEV/HGT	Markings / Type and Colour of OBST LGT	Remarks
a	b	c	d	e	f
CC_A2B_005	Building	06° 50' 07.2" N 079° 53' 48.5"E	21.8M/10.8M		Top of Building
CC_A2B_006	Building	06° 50' 10.8" N 079° 53' 50.4"E	25.1M/14.6M		Top of Building
CC_A2B_007	Building	06° 50' 13.9" N 079° 53' 46.6"E	27.3M/15.0M		Cemetery Chimney
CC_A2B_008	Tree	06° 50' 18.7" N 079° 53' 43.4"E	30.0M/13.5M		Tree
CC_A2B_009	Building	06° 51' 09.1" N 079° 54' 12.7"E	55.1M/36.6M		Sri Ja'pura University
CC_A2C_001	Antenna	06° 49' 05.2" N 079° 52' 57.1" E	25.9M/16.1M		Mast at RWY 04 END
CC_A2C_002	Building	06° 48' 50.4" N 079° 52' 48.8" E	13.5M/5.6M		Agri.Building
CC_A2C_003	Tower	06° 49' 25.2" N 079° 53' 34.4" E	51.7M/49.3M		SLAF COM Tower
CC_A2C_004	Building	06° 49' 33.1" N 079° 54' 25.6" E	63.2M/49.6M		Werahera
CC_A2C_005	Antenna	06° 49' 47.7" N 079° 52' 59.5" E	32.1M/23.8M		-
CC_A2C_006	Antenna	06° 49' 46.0" N 079° 52' 58.3" E	44.6M/37.5M		Dipole Arrey M1
In Area 3					
ID/ Designation	Type	position	ELEV/HGT	Markings/ Type and Colour of OBST LGT	Remarks.
a	b	c	d	e	f
CC_A3_001	Antenna	06° 48' 53.7" N 079° 52' 57.2" E	19.1M/12.7M		SLAF Mast at RWY 04 END
CC_A3_002	Building	06° 49' 01.1" N 079° 53' 02.1" E	15.0M/7.7M		Bata
CC_A3_003	Building	06° 49' 00.7" N 079° 53' 01.9" E	10.9M/4.3M		Bata
CC_A3_004	Building	06° 48' 58.9" N 079° 53' 00.6" E	9.2M/2.7M		Bata sales center
CC_A3_005	Antenna	06° 49' 16.6" N 079° 53' 21.3" E	40.2M/36.4M		Antenna 1 near MET office
CC_A3_006	Antenna	06° 49' 16.4" N 079° 53' 21.7" E	71.3M/67.0M		Antenna 2 near MET office
CC_A3_007	Tank	06° 49' 08.3" N 079° 53' 10.4" E	15.1M/9.0M		Water Tank

VCCC AD 2.11 METEOROLOGICAL INFORMATION PROVIDED

1.	Name of the associated MET Office	RATMALANA/ Colombo International Airport Ratmalana
2.	<ul style="list-style-type: none"> • Hours of Service • MET Office outside hours: 	HJ (METAR/SPECI) H24 (TAF/SIGMET)
3.	Office responsible for TAF preparation: Periods of validity and Interval of issuance	Bandaranaike International Airport Colombo 6-30HR
4.	Trend forecast s and interval of Issuance	-
5.	Briefing/Consultation provided	T / HO
6.	Types of flight documentation: Language(s) used:	C, TB , English
7.	Charts and other information displayed or available for briefing or consultation	S,U,W,C
8.	Supplementary equipment available for providing information	APT
9.	ATS Units provided with MET information	Colombo FIC / RCC / TWR
10.	Additional Information	Tel. +94-11-2634715 , +94-11-2252721
T - Telephone TB - Tabular form		

VCCC AD 2.12 RUNWAY PHYSICAL CHARACTERISTICS

Designations RWY NR	TRUE BRG	Dimensions of RWY (M)	Strength (PCN) and surface of RWY and SWY	THR Co-ordinates THR Geoid undulation (GUND)	
1	2	3	4	5	
04	032.42° GEO	1400 X 30	PCN 34/F/D/Z/U Asphalt	064904.08N 0795300.65E GUND (-) 98.52M	
22	212.42° GEO			064942.59N 0795325.02E GUND (-) 98.61M	
Designations RWY NR	THR elevation and highest elevation of TDZ of precision APP RWY	Slope of RWY/SWY		SWY Dimensions (M)	CWY Dimensions (M)
1	6	7		8	9
04	THR : 7.01M	Longitudinal Slope: - 0.32 % Transverse slope within 1.37%		Nil	Nil
22	THR : 2.52M	Longitudinal Slope : + 0.32 % Transverse slope within 1.32 %		Nil	Nil
Designations RWY NR	Strip Dimensions (M)	RESA Dimensions (M)	Location and description of arresting system	OBST Free Zone	Remarks
1	10	11	12	13	14
04	1520X 150	90 X 60	Nil	-	RWY Shoulders: 6M either side
22	1520X 150	90 X 60	Nil	-	RWY 04/22 closed BTN 0800-1100 (UTC) on 1 st and 3 rd TUE of EV month for SKED MAINT

VCCC AD 2.13 DECLARED DISTANCES

RWY Designator	Intersection Departures	TORA (M)	TODA (M)	ASDA (M)	LDA (M)	Remarks
1	2	3	4	5	6	7
04	-	1400	1400	1400	1400	NIL
22	-	1400	1400	1400	1400	NIL
04	Western TWY	1030	1030	1030	-	NIL
22	Eastern TWY	-	-	-	-	NIL

VCCC AD 2.14 APPROACH AND RWY LIGHTING

RWY Designator	APCH LGT Type, LEN INTST	THR LGT Colour, WBAR	VASIS (MEHT)	TDZ LGT LEN	RWY Centreline LGT Length, Spacing, Colour, INTST	RWY Edge LGT LEN, Spacing, Colour, INTST	RWY End LGT Colour WBAR	SWY LGT LEN (M) Colour	Remarks
1	2	3	4	5	6	7	8	9	10
04	Nil	Green Lights at 371M before the THR markings	PAPI LEFT/3° (11.95M)	N/A	N/A	1400M 61M WHITE Low INST Disregard the Lights before RWY04 THR markings	Red Lights at 60M after the RWY End	N/A	Refer below Remarks.
22	Nil	Green Lights at 60M before the THR markings	PAPI LEFT/3° (11.10M)	N/A	N/A	1400M 61M WHITE Low INST Disregard the Lights after RWY04 THR markings	Red Lights at 371M after the RWY End	N/A	Refer below Remarks.

Remarks :

RWY Lighting System :

The runway lighting system is provided at three intensity levels, only for domestic operations (Except PAPI LGT).

Operation of lights are performed at the air traffic control tower. Runway lights are declared for dusk to dawn operations and standby for international operations.

VCCC AD 2.15 OTHER LIGHTING, SECONDARY POWER SUPPLY

1.	ABN / IBN location, characteristics and hours of operation	ABN : At TWR Building FLG ALTN G &W 16 per min , HO IBN : Nil
2.	LDI location and LGT Anemometer location and LGT	:Nil Anemometer : Fixed with wind wane, 120M from RWY centreline Not Lighted.
3.	TWY edge and centreline lighting	TWY Edge : BLUE (For Western TWY only) Centreline : Nil
4.	Secondary power supply / switch over time	750kVA (Automatic) and 500kVA (Manual) Diesel generators AVBL Switch over time : 10 SEC (Automatic)
5.	Remarks.	Nil

VCCC AD 2.16 HELICOPTER LANDING AREA: Parking area available**VCCC AD 2.17 ATS AIRSPACE**

1.	Designation and lateral limits	RATMALANA CTR: A Circle of 10NM radius centred on Colombo International Airport Ratmalana ARP
2.	Vertical Limits.	SFC to 4000FT ALT
3.	Airspace Classification	C
4.	ATS Unit Call sign Language(s)	Ratmalana Tower English
5.	Transition Altitude	11000FT
6.	hours of applicability	H24
7.	Remarks.	KATUNAYAKE/Bandaranaike Intl Airport Colombo CTR and RATMALANA/Colombo International Airport Ratmalana CTR have been combined. Refer VCBI AD 2.17 .

VCCC AD 2.18 ATS COMMUNICATION FACILITIES

Service Designation	Call Sign	Channel(s)	Hours of Operation	Remarks
1	2	3	4	5
AMS FIS	Colombo	8879 KHz 13306 KHz 3470 KHz 5670 KHz 11285 KHz 13318 KHz	H24	} INO 1, SSB (*) } SEA 1B (*) (*) SELCAL on all frequencies Controlling Authority :AASL
ACC	Colombo Airways	124.9 MHz	H24	Extended Range
	* Colombo Radar	126.0 MHz		* Radar Control service WI 200NM radius centred on Piduruthalagala (COORD:070030N 0804618E) Controlling Authority :AASL
TWR	Ratmalana Tower	119.1MHz	H24	Controlling Authority :AASL

VCCC AD 2.19 RADIO NAVIGATION AND LANDING AIDS

Type of Aid. MAG VAR	ID	Frequency / CH	Hours of operation	Position of transmitting antenna coordinates	Elevation of DME transmitting antenna / RMK
1	2	3	4	5	6 & 7
NDB	RM	350KHz	H24	064948.9N 0795258.6E	44.4M Controlling Authority : AASL



VCCC AD 2.20 LOCAL AERODROME REGULATIONS**1 Light Aircraft Operations at RATMALANA/Colombo International Airport Ratmalana.****1.1 VFR Operations.**

1.1.1 Light aircraft operations normally be conducted under VFR, within 10NM radius of Colombo International airport Ratmalana.

1.1.2 For circuit and landings or local flights of not more than 30 minutes duration, verbal flight notification is acceptable. In such cases the following Information shall be provided to the tower.

- a) Aircraft Identification and Type.
- b) Name of Pilot
- c) ETD.
- d) Flight Duration.
- e) Area of Flight Operation.

1.1.3 Light aircraft operations may be authorized at the discretion of ATC when traffic conditions permit.

1.1.4 All light aircraft not equipped with radio shall watch out for and follow any visual signals when operating in the traffic circuit.

1.1.5 It is the sole responsibility of the pilots of all light aircraft not equipped with radio to watch out for other traffic and maintain adequate separation with them.

1.1.6 During day time (0030 to 1230 UTC) VFR Traffic from VCCC to Northern DEST and vice versa be permitted through VCR23 along the Track defined by three waypoints (R6,R7 and R8) as below.

R6 – 06°52'11.61"N 079°53'17.44"E
R7 – 06°56'59.38"N 079°55'12.98"E
R8 – 07°01'41.69"N 079°55'17.45"E

The Minimum ALT to be maintained along this track within VCR23 be restricted to 2000ft

1.1.7 Right turns for traffic departing from RWY22 VCCC be permitted subject to be clear of VCR23 or when compliant with conditions as per 1.1.6 above.

1.1.8 Light fixed wing aircraft and helicopters in the Right Hand Circuit of RWY 22 and Left Hand Circuit of RWY 04 may be accommodated subject to clear of VCP7,VCP34 and VCR23.

1.2 IFR Operations.

1.2.1 Requests for operations under IFR may be approved if the aircraft is suitably equipped for IFR operations and the pilot is appropriately rated. The aerodrome controller shall be the final authority in authorizing such operation from the point of view of air traffic.

1.3 Cross Country Flights.

1.3.1 Pilots of aircraft proceeding on cross country flights shall file a flight plan with ATC at least Thirty (30) minutes before the ETD. The pilot in command should personally present himself at the control Tower and obtain briefing and clearance from the duty air traffic controller. The flight shall be conducted strictly in accordance with the clearance obtained.

2. Taxing Limitations.

2.1 Eastern taxiway Closed ←

3 Helicopter Traffic limitations.

3.1 Nil

VCCC AD 2.21 NOISE ABATEMENT PROCEDURES

VCCC AD 2.22 FLIGHT PROCEDURES

VCCC AD 2.23 ADDITIONAL INFORMATION

1. Bird concentrations in the vicinity of the airport

1.1 Normally, concentration of birds reported towards RWY 22 and RWY 04 approach paths and the vicinity of airfield from ground to 500ft above ground level during sunrise to sunset.

1.2 Pilots are requested to report bird strikes using the prescribed Bird Strike Incident Reporting Form [CAA/AS/010] available at the aerodrome AIS unit.

VCCC AD 2.24 CHARTS RELATED TO AN AERODROME

Chart Name	Page
Aerodrome Chart	VCCC AD 2-25
Aircraft Parking / Docking Chart - ICAO	VCCC AD 2-27
Aerodrome Obstacle Chart – ICAO Type A	VCCC AD 2-29
Visual Approach Chart (RWY 04) – ICAO	VCCC AD 2-31
Visual Approach Chart (RWY 22) – ICAO	VCCC AD 2-33

RATMALANA / COLOMBO INTL . AIRPORT RATMALANA

AERODROME CHART -ICAO

06° 49' 23" N
079° 53' 06" E

ELEV 7.01m

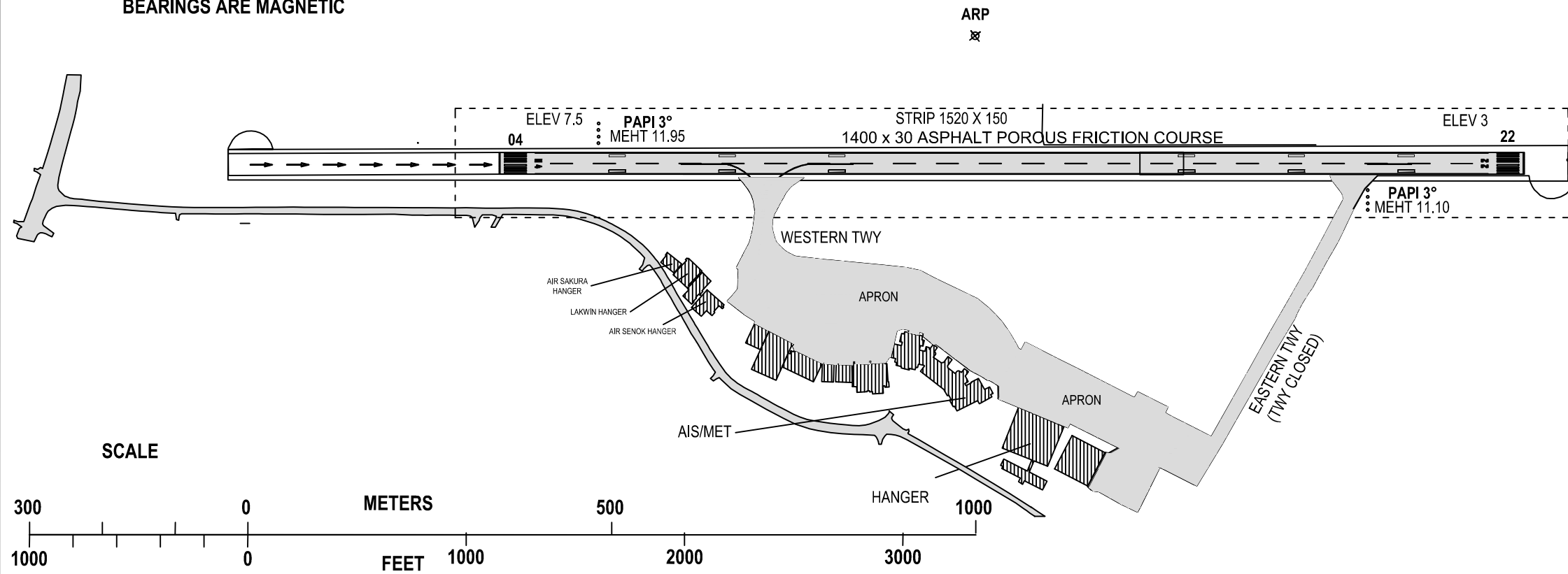
TWR 119.1
SMC 121.8

RATMALANA / COLOMBO INTL . AIRPORT RATMALANA

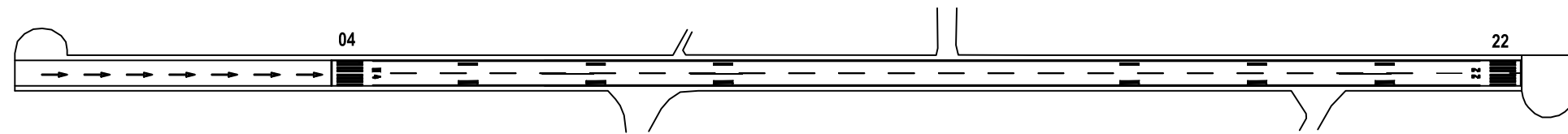
RWY	DIRECTION	THR	BEARING STRENGTH
04	35°	06° 49' 04"N 079° 53' 01"E	PCN34/F/D/Z/U
22	215°	06° 49' 43"N 079° 53' 25"E	

VAR 2°W 2021
(Annual change negligible)

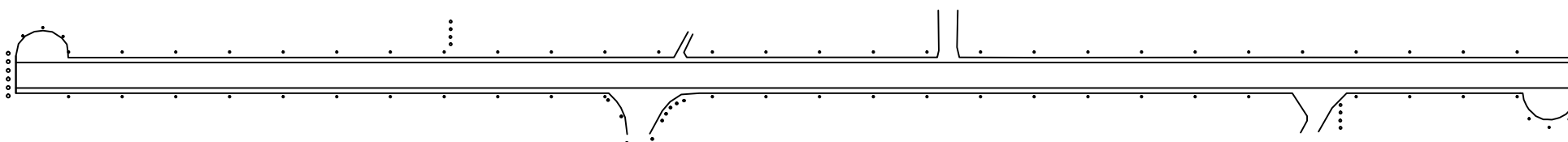
ELEVATIONS AND DIMENSIONS IN METERS
BEARINGS ARE MAGNETIC



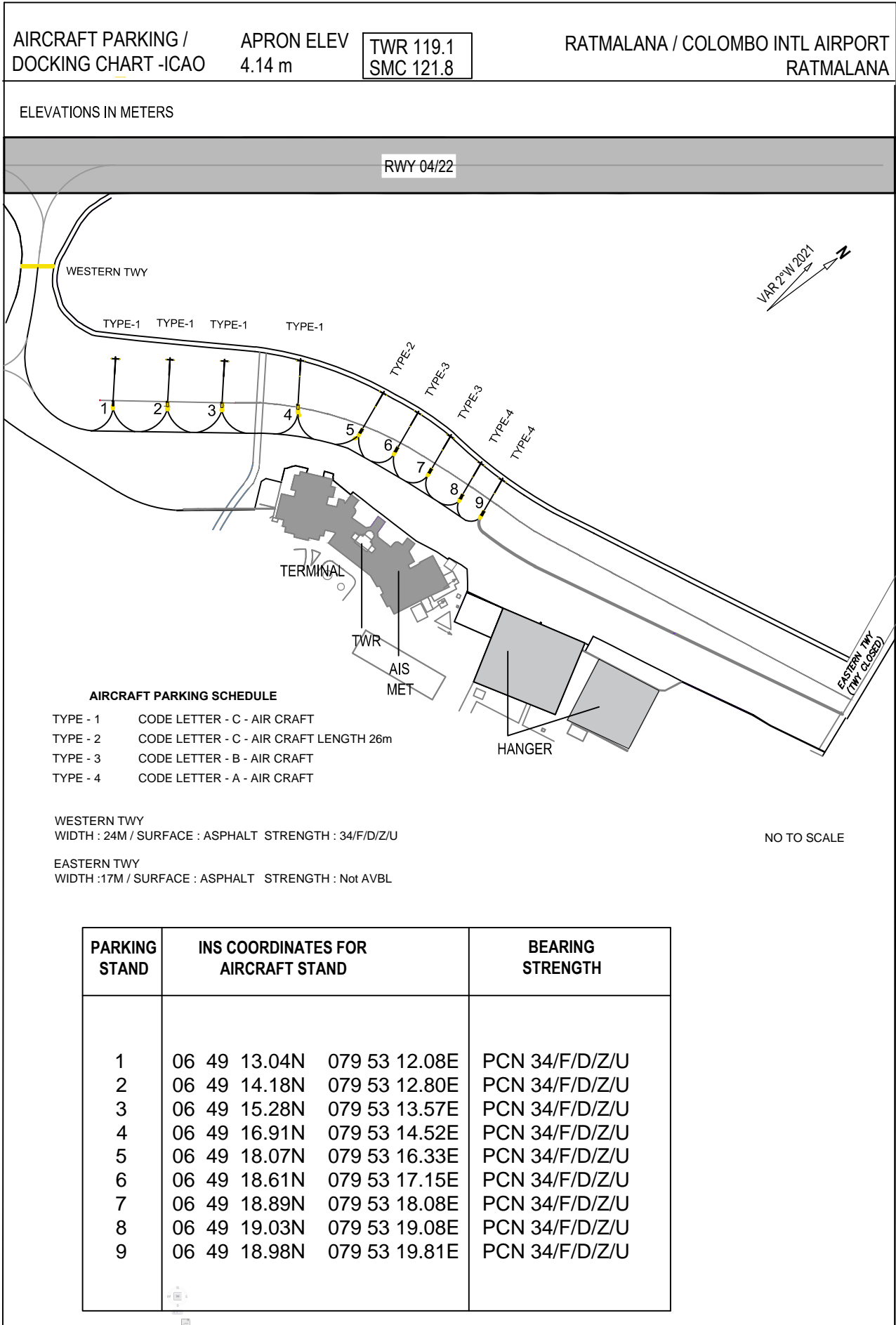
MARKING AIDS RWY 04 / 22 AND EXIT TWY



LIGHTING AIDS RWY 04 / 22 AND EXIT TWY



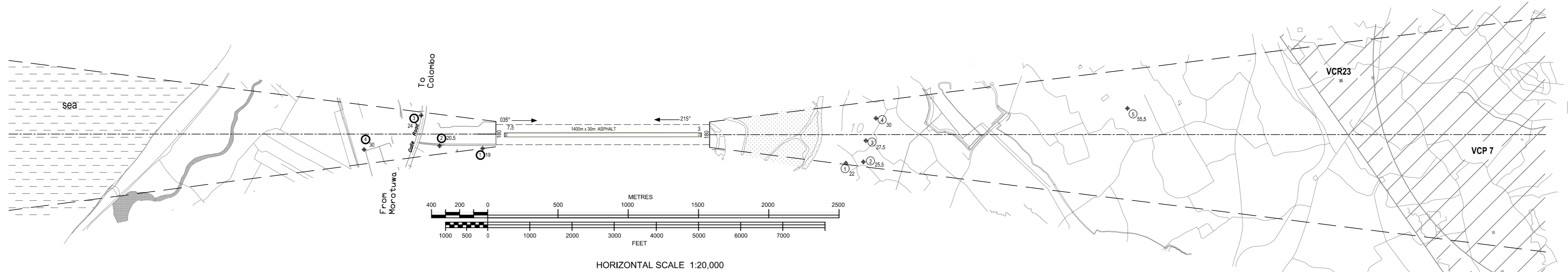
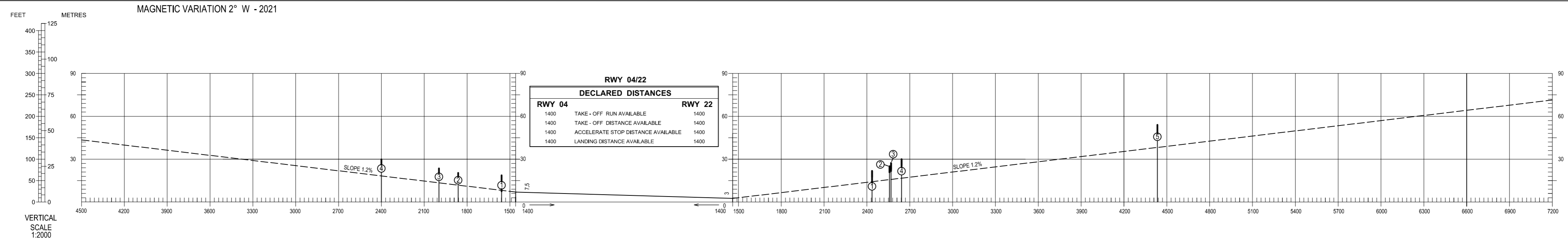
Changes -Magnetic Variation



AERODROME OBSTACLE CHART - ICAO TYPE A (OPERATING LIMITATIONS)

DIMENSIONS AND ELEVATION IN METRES

SRI LANKA / RATMALANA/COLOMBO INTL. AIRPORT RATMALANA
RWY 04/22



LEGEND	
IDENTIFICATION NUMBER	○
ROAD	—
WATER BODIES	▨
FOREST	▤
SEA	▧
VCR / VCP	▩

ORDER OF ACCURACY :	HORIZONTAL 0.1m
	VERTICAL 0.1m
CHANGE :	NEW SURVEY
SURVEY DATA RECEIVED DATE :	2022 03 22
SURVEY BY :	SRI LANKA SURVEY DEPARTMENT

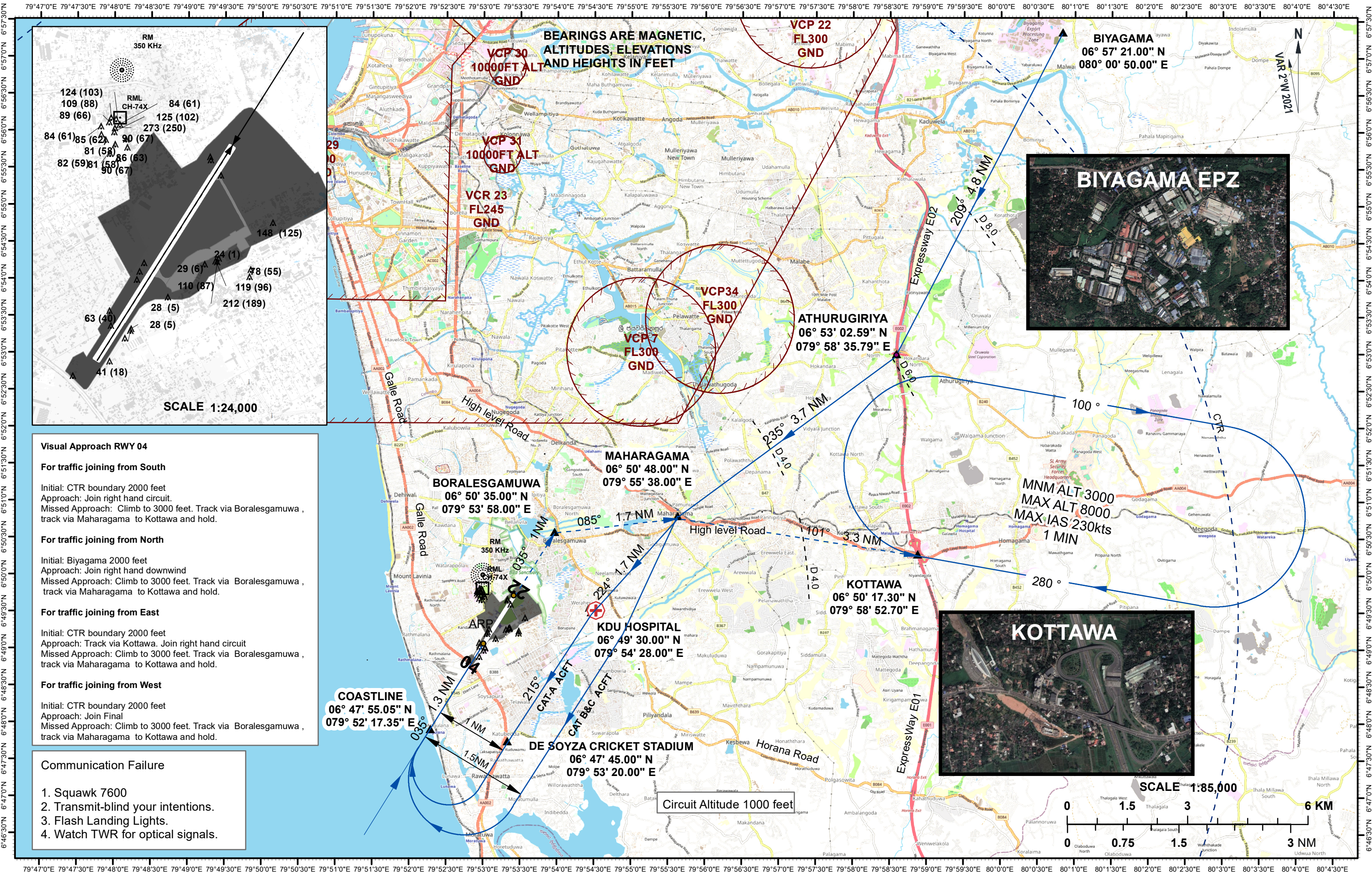
AMENDMENT RECORD		
NO	DATE	ENTERED BY

VISUAL APPROACH CHART - ICAO

AD ELEVATION 23 FT
HEIGHTS RELATED TO AD ELEV

TWR 119.1

RATMALANA / COLOMBO INTL AIRPORT RATMALANA. (VCCC) RWY 04



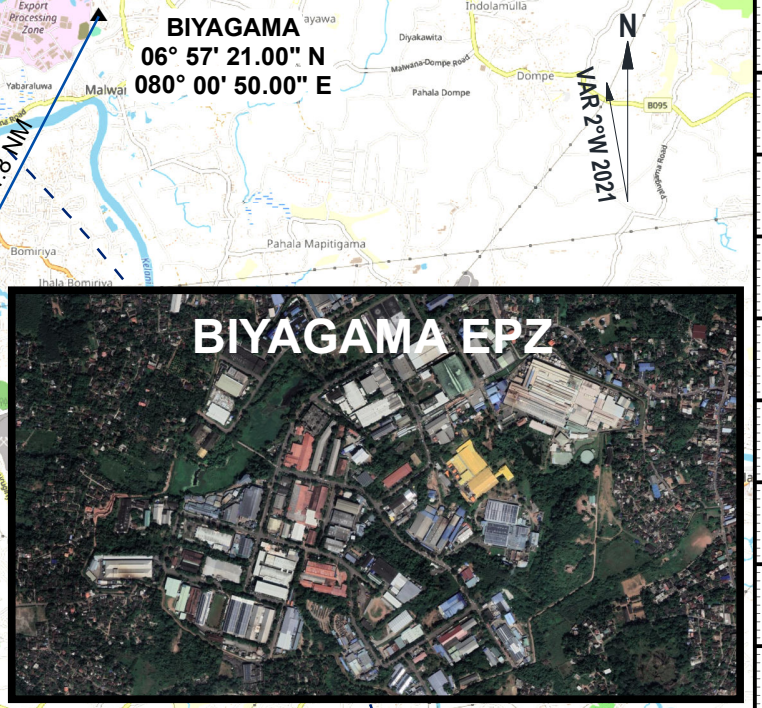
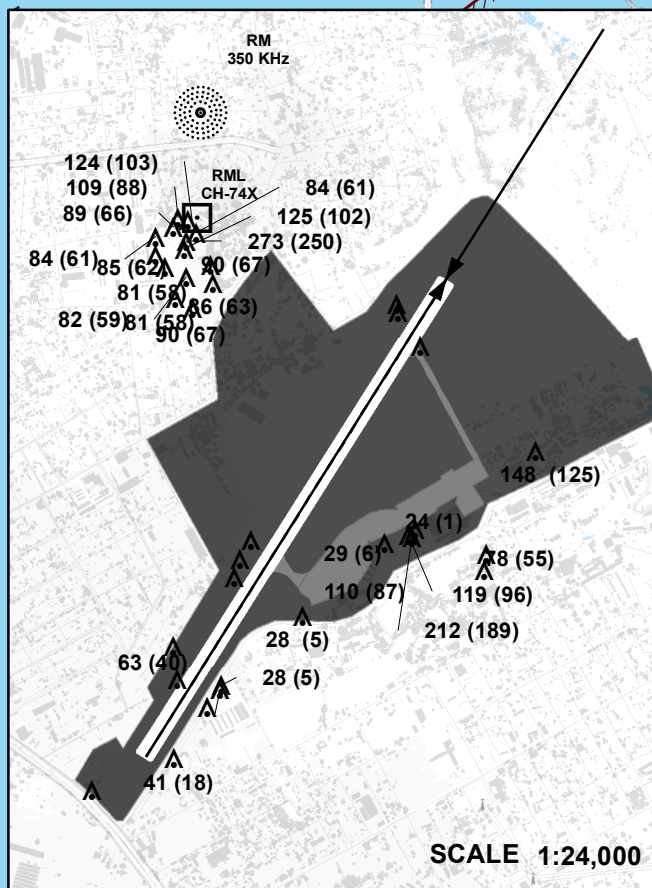
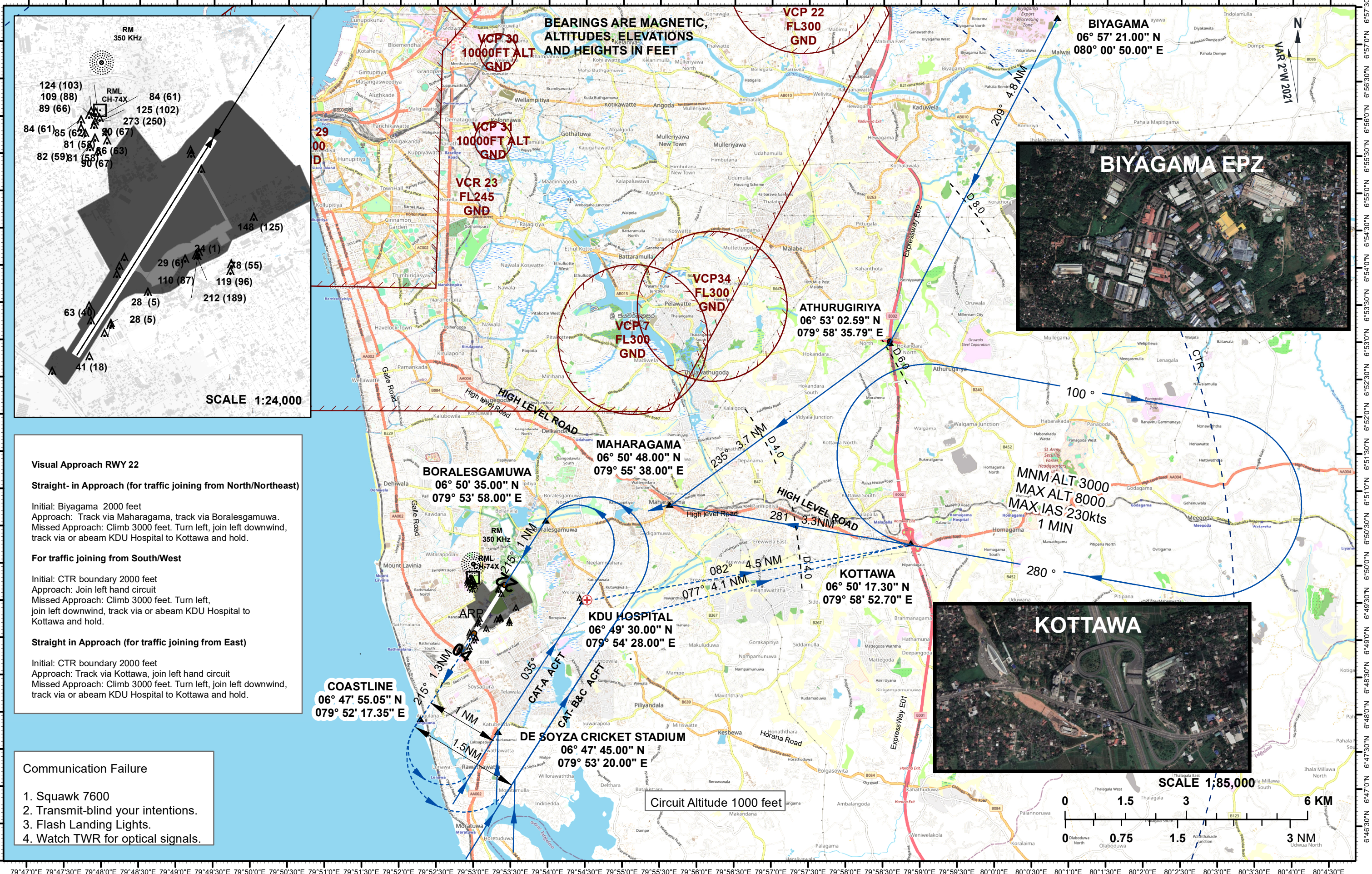
VISUAL APPROACH CHART - ICAO

AD ELEVATION 23 FT
HEIGHTS RELATED TO AD ELEV

TWR 119.1

RATMALANA / COLOMBO INTL AIRPORT RATMALANA. (VCCC) RWY 22

79°47'0"E 79°47'30"E 79°48'0"E 79°48'30"E 79°49'0"E 79°49'30"E 79°50'0"E 79°50'30"E 79°51'0"E 79°51'30"E 79°52'0"E 79°52'30"E 79°53'0"E 79°53'30"E 79°54'0"E 79°54'30"E 79°55'0"E 79°55'30"E 79°56'0"E 79°56'30"E 79°57'0"E 79°57'30"E 79°58'0"E 79°58'30"E 79°59'0"E 79°59'30"E 80°0'0"E 80°0'30"E 80°1'0"E 80°1'30"E 80°2'0"E 80°2'30"E 80°3'0"E 80°3'30"E 80°4'0"E 80°4'30"E



Visual Approach RWY 22

Straight-in Approach (for traffic joining from North/Northeast)

Initial: Biyagama 2000 feet
Approach: Track via Maharagama, track via Boralessgamuwa.
Missed Approach: Climb 3000 feet. Turn left, join left downwind, track via or abeam KDU Hospital to Kottawa and hold.

For traffic joining from South/West

Initial: CTR boundary 2000 feet
Approach: Join left hand circuit
Missed Approach: Climb 3000 feet. Turn left, join left downwind, track via or abeam KDU Hospital to Kottawa and hold.

Straight in Approach (for traffic joining from East)

Initial: CTR boundary 2000 feet
Approach: Track via Kottawa, join left hand circuit
Missed Approach: Climb 3000 feet. Turn left, join left downwind, track via or abeam KDU Hospital to Kottawa and hold.

Communication Failure

1. Squawk 7600
2. Transmit-blind your intentions.
3. Flash Landing Lights.
4. Watch TWR for optical signals.